

AIM TECH

Engineering Solutions Pvt. Ltd.

An ISO 9001 : 2015, ISO 14001 : 2015 & CE Certified Company
S. NO. 186, KIRKATWADI - NANDOSHI ROAD, NANDOSHI, PUNE 411 024.

www.aimtechindia.com
www.aimtechpune.com



Quotations are commonly printed as a means of inspiration and to invoke philosophical thoughts from the reader.





Index

- INTRODUCTION
- COMPANY MISSION & VISION
- ORGANIZATION CHART
- OUR APPROVALS
- LIST OF MACHINES
- SNAPS OF MFG. FACILITIES
- PRODUCT RANGE
- QUALITY CONTROL INSTRUMENTS
- LIST OF MAJOR CUSTOMERS
- COMMERCIAL DETAILS

Introduction

AIM TECH ENGINEERING SOLUTIONS PVT. LTD. is a recognized ISO 9001 :201 5, ISO 1 4001 :201 5 & CE Certified engineering product and solutions provider company in specialized Industrial Fasteners/ Foundation bolt, U Clamp , Forging, Casting, Sheet metal and Fabrication. Technology based services, incorporated with a vision to be known as the Leading in the Application and Service Industry. Because of its strong credentials, values and process based operations in a short span of time AIM TECH has earned respect amongst its peers and strongly established itself as a leading solution provider company in FASTENERS, CONNECTION BOLT, FOUNDATION BOLTS.

Aim tech established as a leading & growing manufacturer and supplier of specialized fasteners, Foundation bolts, sheet metal components, forging and Casting Items. We are providing the services to different kind of product & project kind of industries like Pre-engineering building solution, Refineries, Dairy, Cement, Sugar, Steel Mills, Tele- communication and infrastructure Industry. Our workmanship are supported with designed, quality and engineering excellence team. We have established high technology infrastructure to cater to engineering Challenges.

Our vast experience in the field of heavy & light duty Anchoring solutions, Specialized fasteners, Forging and casting. We offer wide variety of fabrication solutions to various electrical, mechanical, dairy and chemical energy and allied industries.

Our extensive state of the art facilities & fully fledged manufacturing facilities empowers us in detail engineering, manufacturing on turnkey basis with best of quality and cost- effectiveness.

Mission & Vision

We at Aim-Tech are manufacturers, stockiest, importer and dynamic emerging Company of **High Quality Fastener products** to cater for diverse Industrial needs.

With rich experience in the industry, Aim-Tech has transformed the expertise into reality for delivering the product required by customer. With proper communication with our customers we are able to provide our **Best service & Prompt delivery** each time.

Our Dynamic Leaders

**Mr. Sanjay
Desai**

DIRECTOR - SALES &
COMM.

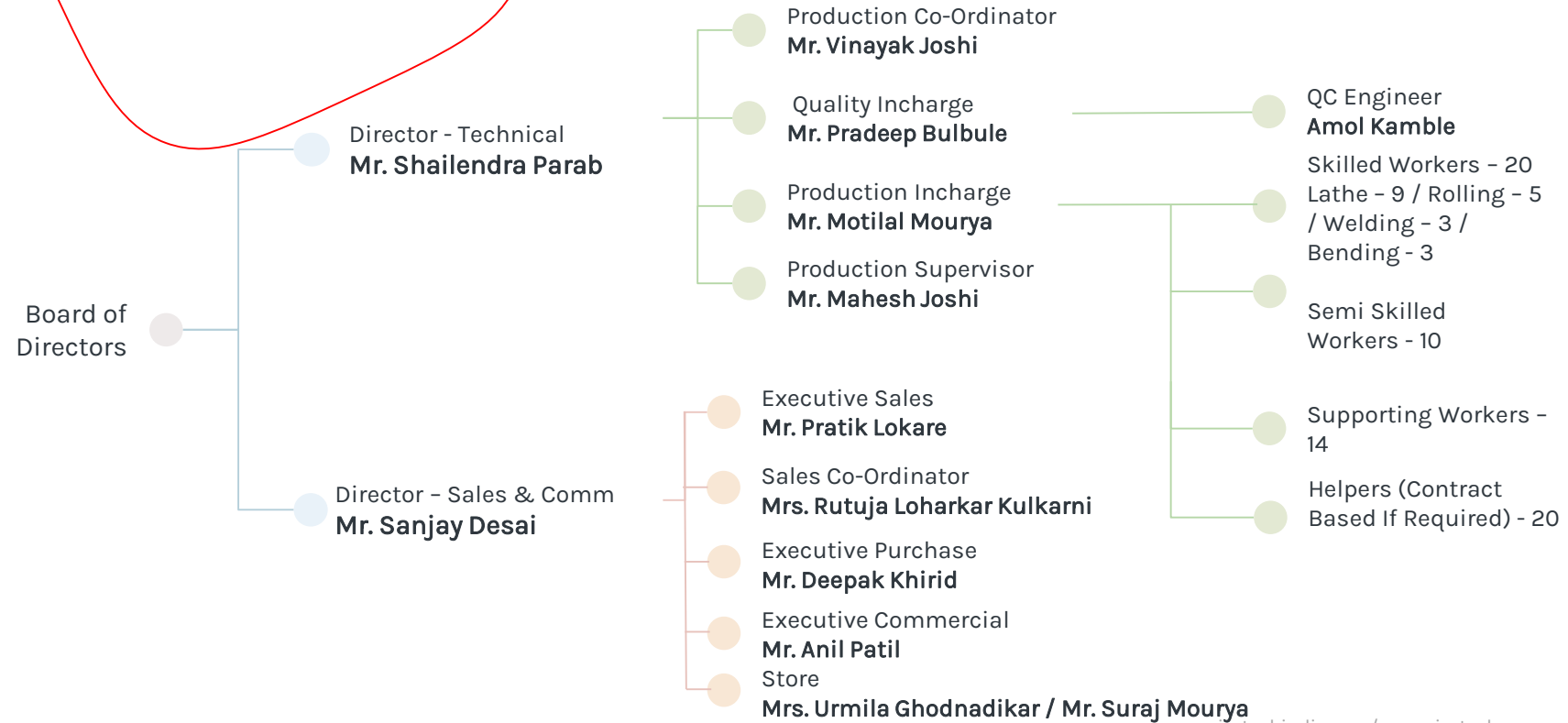


**Mr. Shailendra
Parab**

DIRECTOR - TECHNICAL



Organisation Chart



Our Approvals



CERTIFICATE No. 39033/19/AN

IT IS HEREBY CERTIFIED THAT THE QUALITY MANAGEMENT SYSTEM OF
AIM TECH ENGINEERING SOLUTIONS PVT. LTD.
 SURVEY NO.186, AT POST- NANDOSHI, KHADAKWASLA ROAD, TALUKA- HAVELI, PUNE, 411024, MAHARASHTRA, INDIA
 BY THE FOLLOWING OPERATIONAL UNITS
 SURVEY NO.186, AT POST- NANDOSHI, KHADAKWASLA ROAD, TALUKA- HAVELI, PUNE, 411024, MAHARASHTRA, INDIA

IS IN COMPLIANCE WITH THE STANDARD
ISO 9001:2015
 FOR THE FOLLOWING FIELDS OF ACTIVITIES

MANUFACTURING OF FASTENERS, MACHINED AND SHEET METAL PRESS PARTS COMPONENTS FOR INDUSTRIAL APPLICATION

Previous certification cycle expiry date: 05/12/2022 and renewal audit ended on: 03/02/2023

The validity of this certificate is dependent on an annual / six monthly audit and on a complete review, every three years, of the management system. The use and validity of this certificate are subject to compliance with the ISO 9000 standard. Please refer to the Introduction of Quality Management Systems.

Alok Kumar
 India Certification
 Head

First Issue	06.12.2019
Expiry Date	05.12.2025
Revision date	23.02.2023
Renewal decision date	23.02.2023

RINA Services S.p.A.
 Via Geronzi 12 - 10128 Genova, Italy





© 2023 RINA Services S.p.A. - All rights reserved.
 RINA is a member of IQNET

CERTIFICATION FOR ISO 9001:2015

CERTIFICATE OF COMPLIANCE CE



Certificate of Compliance
CE

We hereby declare that the technical file of product complied with the requirement of Construction products (CPD/CPB) 89/106/EEC as Amended Regulation (EU) 305/2011 and directives 93/68/EEC

Certificate No.: CE-3676

Manufacturer
 Name : AIM TECH ENGINEERING SOLUTIONS PVT. LTD
 Address : SR. NO. 186, KIRKATWADI-NANDOSHI ROAD, AT. POST- NANDOSHI, TAL- HAVELI, DIST. PUNE- 411024, MAHARASHTRA, INDIA

Products : LIFTING EYE BOLTS AND FOUNDATION BOLTS

The quality system file has been assessed, approved and is subject to continuous surveillance according to the Council Directive Construction products (CPD/CPB) 89/106/EEC as Amended Regulation (EU) 305/2011 and directives 93/68/EEC

This certificate is issued under the following conditions:

- It applies only to the quality system maintained in the manufacture of above referenced models and it does not substitute the design or type examination procedures, if requested.
- The certificate remains valid until the manufacturing conditions or the quality systems are changed.
- The certificate validity is conditioned by positive results on surveillance audits.

The CE mark as shown above can be used, under the responsibility of the manufacturer, after completion of an EC Declaration of conformity and compliance with all relevant EC Directives. The statement is based on a single evaluation of one sample of above mentioned product. It does not imply an assessment of the whole production.

Validity of this certificate can be verified at www.ukcertifications.org.uk/verify

Date of Certification	16 th November 2022
1 st Surveillance Audit Due	15 th November 2023
2 nd Surveillance Audit Due	15 th November 2024
Certificate Expiry (subject to the company maintaining its system to the required standard)	15 th November 2025


 Authorised Signatory



This certificate is the property of UK Certification & Inspection Limited and shall be returned immediately on request.
 17, 20 Station Street, Canal Garden, London, WC2E 8JQ, United Kingdom
 Website: www.ukcertifications.org.uk, email: info@ukcertifications.org.uk
 Company No. 11847853

Our Approvals



CERTIFICATION FOR ISO 14001:2015

CERTIFICATE OF MPCB

MAHARASHTRA POLLUTION CONTROL BOARD

Tel: 020 - 25816451 Jog Center, 3rd floor,
Fax: 020 - 5811701 Mumbai Pune Road,
Website: <http://mpcb.gov.in> Wakdevadi, Pune - 411003.
Email: sropune2@mpcb.gov.in

GREEN/S.S.I (I) Date: 09/01/2023
No: Form11.01SRO/UAN
No.0000155085/CE/2301000789

To,
AIM TECH ENGINEERING SOLUTIONS PVT. LTD.
SR. NO. 186, SR. NO. 186, KIRKATWADI-NANDOSHI
ROAD, AT - POST - NANDOSHI,
Tal: HAVELI, Dist: Pune 411024

Sub: Application for Combined Consent to Establish and Operate at a time in Green SSI category.

Your application No.MPCB-CONSENT-0000155085 Dated 04.12.2022
For: grant of Consent to Establish under Section 25 of the Water (Prevention & Control of Pollution) Act, 1974 & under Section 21 of the Air (Prevention & Control of Pollution) Act, 1981 and Authorization under Rule 6 of the Hazardous & Other Wastes (Management & Transboundary Movement) Rules 2016 is considered and the consent is hereby granted subject to the following terms and conditions and as detailed in the schedule I, II, III & IV annexed to this order:

- The Combined Consent to Establish and Operate at a time in Green SSI category is hereby granted for a period up to 31/03/2025.
- The capital investment of the project is Rs.0.95 Crs. (As per undertaking submitted by pp Existing CI is-Rs. 0 Crs + Expansion/Increase in C.I. - Rs. 0 Crs)
- Consent is valid for the manufacture of:

Sr No	Product	Maximum Quantity	UOM
1	FOUNDATION BOLTS	5000	Pcs/M
2	U CLAMPS	2150	Pcs/M
3	TURN BUCKLE & CLEVIS	300	Pcs/M
4	HEX BOLTS/FASTNERS	3000	Pcs/M
5	HEX NUTS	3000	Pcs/M
6	STUDS	600	Pcs/M
7	EYE BOLTS	450	Pcs/M
8	T-BOLT	50	Pcs/M
9	CLEVIS	600	Pcs/M
10	BOLTS	5000	Pcs/M

(Without any kind of painting, paint stripping, plating, phosphating, pickling, pre-treatment or any surface treatment activity)

AIM TECH ENGINEERING SOLUTIONS PVT. LTD. (CE/UAN No.MPCB-CONSENT-0000155085/India-Id:20732
(09-01-2023 04:13:30 pm) IQMS_P06_F0100

Page 1 of 9

List of machines

Machines	Description
LATHE L01	HEAVY DUTY 80MM BORE - 3HP
LATHE L02	MED DUTY 55MM BORE - 3HP
LATHE L03	MED DUTY 55MM BORE - 3HP
LATHE L04	LIGHT DUTY 40MM BORE - 3 HP
LATHE L05	LIGHT DUTY 40MM BORE - 3 HP
LATHE L06	LIGHT DUTY 40MM BORE - 3 HP
LATHE L07	LIGHT DUTY 40MM BORE - 3 HP
LATHE L08	HEAVY DUTY 80MM BORE - 3 HP
LATHE L09	LIGHT DUTY 40MM BORE - 3 HP
LATHE L10	HEAVY DUTY 80MM BORE - 3 HP
LATHE L11	LIGHT DUTY 40MM BORE - 3 HP
LATHE L12	LIGHT DUTY 40MM BORE - 3 HP
THREAD ROLLING R01	15T - 5+3HP, 1HP SINGLE PHASE
THREAD ROLLING R02	20T - 7.5+5HP, 1 HP SINGLE P
THREAD ROLLING R03	30T - 15+7.5HP, 1 HP SINGLE
THREAD ROLLING R04	15T - 5+3HP, 1HP SINGLE PHAS
THREAD ROLLING R05	50T - 50+15HP+1HP SINGLE PHASE
CENTRELESS GRINDING MACHINE G01	4 HP
THREAD CUTTING TC01	5+1HP
THREAD CUTTING TC02	3HP
THREAD CUTTING TC03	-

BANDSAW CUTTING C01	1HP 16A
BANDSAW CUTTING C02	1HP 16A
BANDSAW CUTTING C03	1HP 16A
MILLING M01	16A
TRAUB T01	32A
TRAUB T02	32A
TRAUB T03	32A
BENCH GRINDER BG01	16A
BENCH GRINDER BG02	16A
BLADE WELDING BW01	16A
MARKING STAMPS MRK01	3HP
J BEND JB01	-
ABRASIVE BELT GRINDER VB01	3HP
U BEND UB01	-
NUT ASSEMBLY MACHINE N01	M12, M16

List of machines

Machines	Description
WELDING CO2 W01	16A
WELDING ARC W02	16A
WELDING CO2 W03	16A
WELDING CO2 W04	16A
HYDRAULIC PRESS HP01	10 HP
PRESS/CUTTING HP02	16A
HAND PRESS HP03	16A
HYDRAULIC PRESS MARKING HP04	16A
RADIAL DRILLING D01	2HP-16A
RADIAL DRILLING D02	2HP
RADIAL DRILLING D03	2HP
RADIAL DRILLING D04	2HP
RADIAL DRILLING D05	2HP
RADIAL DRILLING D06	2HP

GAS CUTTING MACHINE GC1	ARPP
PROFILE CUTTING MACHINE PC1	SKE ENGINEERING
OVER HEAD CRANE OHC1	ATV
LASER MARKING MACHINE LM1	BHAGYALAXMI
CNC TURNING CNC1	ACE MICROMATIC
CHILLER CH1	-
CHILLER CH2	-
CHILLER CH3	-
SPOT WELDING SW1	-
GENERATOR DG01	KIRLOSKAR



Our Manufacturing Facility







AIM Tech Engineering
Solutions Pvt. Ltd.





Product Range

- We make all the products as per Dimension standards.
- Also manufacture Custom made to order Products as per design (drawings).



Product range



Foundation Bolts

A Foundation bolt is used to join objects to concrete. We have many types of foundation bolts. Foundation bolts are used in all the sectors from power plants to buildings.

- **SIZE** : METRIC STD - RANGING FROM M6 - M100
ANSI STD -RANGING FROM M1/4" - 4 "

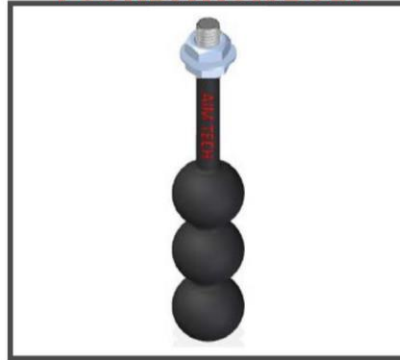
- **MATERIAL SPECIFICATION** : IS 1367 GR 4.6/8.8/10.9/12.9

- **DIMENSION SPECIFICATION** : IS 1363/64 , DIN 933/934 ,
ANSI / ASME STD

**STRAIGHT TYPE
FOUNDATION BOLT**



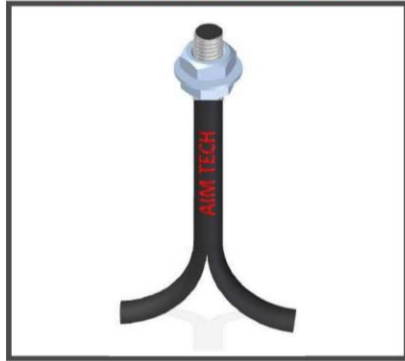
**BALL TYPE
FOUNDATION BOLT**



**EYE TYPE
FOUNDATION BOLT**



**SPLIT TYPE
FOUNDATION BOLT**



**V-TYPE WITH CROSS ROD
FOUNDATION BOLT**



**FULL THREADED TYPE
FOUNDATION BOLT**



**HEX TYPE
FOUNDATION BOLT**



Light Duty

**L-TYPE
FOUNDATION BOLT**



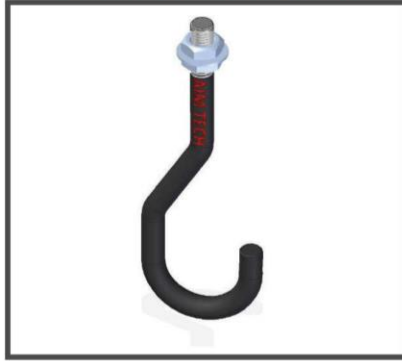
**J-TYPE
FOUNDATION BOLT**



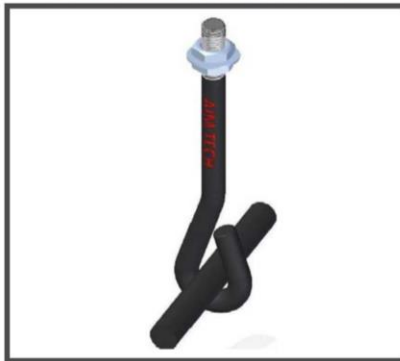
**Z-TYPE
FOUNDATION BOLT**



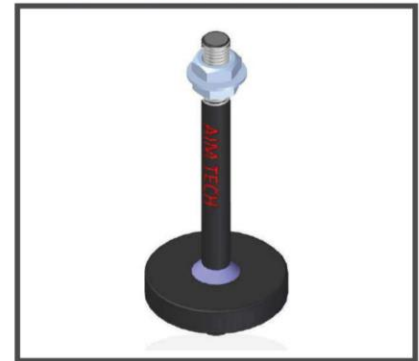
**Z & J-TYPE
FOUNDATION BOLT**



**EYE TYPE WITH CROSS ROD
FOUNDATION BOLT**



**PLATE-TYPE
FOUNDATION BOLT**



Medium Duty

**PLATE & SLEEVE TYPE
FOUNDATION BOLT**



**J & SLEEVE TYPE
FOUNDATION BOLT**



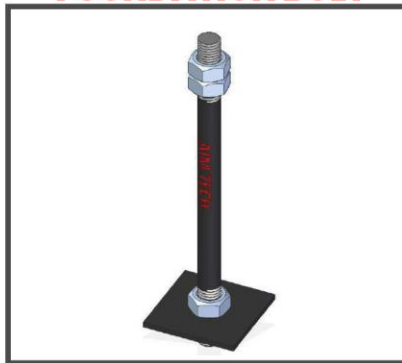
**GUSSET & PLATE TYPE
FOUNDATION BOLT**



**GUSSET PLATE & SLEEVE TYPE
FOUNDATION BOLT**



**BOTH END THREADED
WITH PLATE TYPE
FOUNDATION BOLT**



**BOTH END THREADED
WITH PLATE & SLEEVE TYPE
FOUNDATION BOLT**



Heavy Duty

Product range



U Clamps

U CLAMP is a fastening device to hold or secure objects tightly together to prevent movement or separation. There are many types of clamps available for many different purposes.

- **SIZE** : METRIC STD -RANGING FROM M6 - M100
ANSI STD -RANGING FROM M1/4" - 4 "
- **MATERIAL SPECIFICATION** : IS 1367 GR 4.6/8.8/10.9/12.9
SA 193 B7/B8/B8M/B16
- **DIMENSION SPECIFICATION** : IS 1363/64 , DIN 933/934 ,
ANSI / ASME STD

Product range



Turn Buckle & Clevis (Forged item)

The specifications of **Turn Buckle** are:

- **SIZE** : METRIC STD - RANGING FROM M10 - M36
& ALSO AS PER CUSTOMER SPECIFICATION
- **MATERIAL SPECIFICATION** : MS/ ALLOY STEEL
DEPENDS ON BRAKING STRENGTH
- **DIMENSION SPECIFICATION** : AS PER CUSTOMISED DRAWING

The specifications of **Clevis** are:

- **SIZE** : METRIC STD - M10 - M36, ABOVE 36 - REQUIRED DRG
& ALSO AS PER CUSTOMER SPECIFICATION
- **MATERIAL SPECIFICATION** : MS/ ALLOY STEEL
DEPENDS ON BRAKING STRENGTH
- **DIMENSION SPECIFICATION** : AS PER CUSTOMISED DRAWING

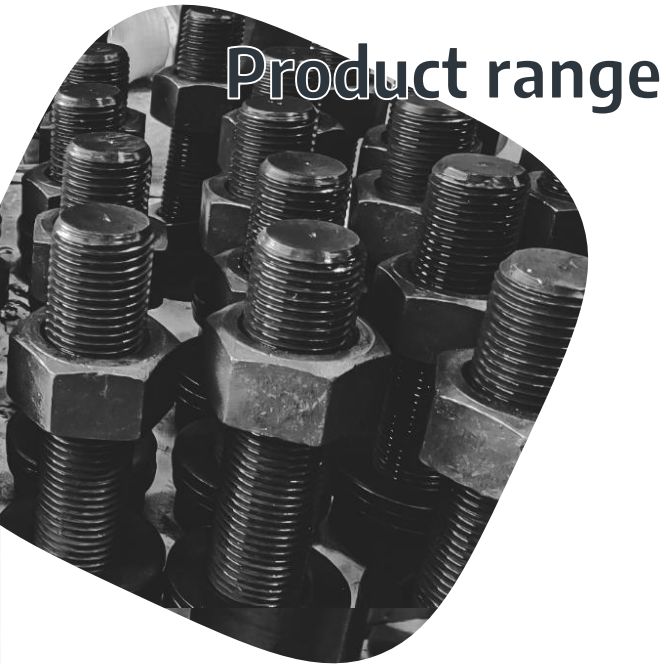
Product range



Hex Bolts / Fastners (Screws/Bolts)

We offer Hex bolts which are available in various thread size, key size and length. It's made up of various material grades which ensures the durability and exact dimensions. Further, some of the specifications of our hex head bolts are -

- **SIZE** : METRIC STD -RANGING FROM M6 - M100
ANSI STD -RANGING FROM M1/4" - 4 "
- **MATERIAL SPECIFICATION** : IS 1367 GR 4.6/8.8/10.9/12.9/ SS -304/ SS-316
SA 193 B7/B8/B8M/B16
- **DIMENSION SPECIFICATION** : IS 1363/64 , DIN 933/934 , ANSI / ASME STD



Hex Nuts

Our product has the following specifications:

- **SIZE** : METRIC STD -RANGING FROM M6 - M100
ANSI STD -RANGING FROM M1/4" - 4 "

- **MATERIAL SPECIFICATION** : IS 1367 GR 4/8/10/12
SA 194 2H/2HM/ 8 / 8M

- **DIMENSION SPECIFICATION** : IS 1363/64 , DIN 933/934 , ANSI / ASME STD

Nylock Nuts

The specifications of nylock nuts are:

- DIN: 982, 985/
UNC/UNF/BSF
- Range: Dia- M 6 to M
24
- Inches: 3/16" to 1"

Plain Washers

Our plain washers are available with the following specifications:

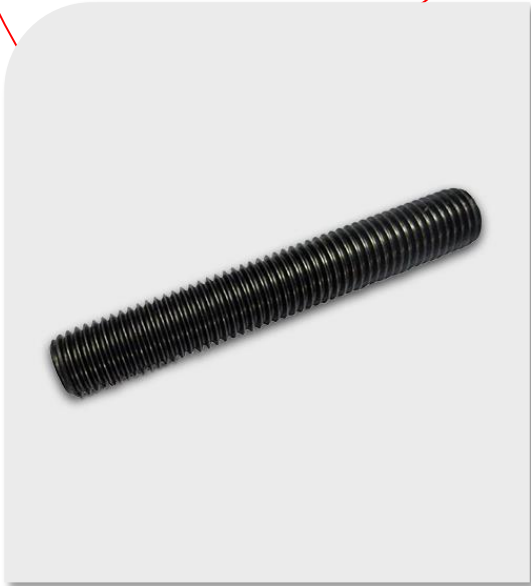
- DIN: 125
- Range: Dia - M1.5 to
M42
- Stainless steel & MS

Spring Washers

The specifications of our spring washers are:

- DIN: 127
- Range: Dia - M2 to
M50
- Stainless steel & MS

Product range



Studs (Full / Half Threaded)

The specifications of our Studs are:

- **SIZE** : METRIC STD -RANGING FROM M6 - M100
ANSI STD -RANGING FROM M1/4" - 4 "
- **MATERIAL SPECIFICATION** : IS 1367 GR 4.6/8.8/10.9/12.9
SA 193 B7/B8/B8M/B16
- **DIMENSION SPECIFICATION** : IS 1363/64 , DIN 933/934 ,
ANSI / ASME STD

Product range



Eye Bolts

The specifications of our Eye Bolts are:

- DIN 580 / IS 4190
- As per the requirement /Drg. of the customer.

Other Products

1. T-Bolt

2. Bevel Washer

3. Turn buckle assembly with flat I-end



Other Products



1 . Eye-type
Foundation bolt



2 . Clevis



3 . Low Clip

4 . Gundi type eye
bolt



4



Quality at it's best

Quality Control Instruments we use

- Dial verniers
- Micrometers
- Hardness Tester
- D.P.Test facility (Outsourced Agency)
- Radiography (Outsourced Agency)
- We also have regularly required instruments for fabrication purpose viz. dividers / inside-outside calipers / scales etc.

Material Testing (Outsourced Agencies)

- Perfect Laboratory Services
- Om Meta Lab Services Pvt Ltd
- Chaitanya NDT & Analytical Services
- Sky NDT Services (UT /MPT)



Major Customers



GAIL (India) Limited



Regret to mention names, but some of the well known Consultant & Traders are also enrich our client base.

& many more...

Commercial Details

- **GSTIN NO** – 27AAGCA5168G1ZL
- **PAN NO** – AAGCA5168G
- **CIN No.** – U29299PN2007PTC130572
Dated 14/08/2007
- **HSN RATE** – 18 %
- **HSN CODE** – 73181500
- **MSME NO** – 270251109225
- **IEC NUMBER** – 3108000187, Date – 02/04/2008
- **UDYOG AADHAAR NUMBER** - 289432997087
- **UDYAM REGISTRATION NUMBER** - UDYAM-MH-26-0054141



Contact us

Office / Works Address :

- Sr. No. 186, Nandoshi , Tal. Haveli , Pune -411024.
- **M:** +91 97641 13247, +91 76203 13247

✉ response@aimtechpune.com,

✉ sales@aimtechpune.com

🌐 www.aimtechindia.com, www.aimtechpune.com

We hope that we have given all the relevant information about us. In case you need further information you please feel free to contact us. Also, we take this opportunity to ensure you our level best co-operation at all times.



Thanks!

Any questions?

Do revert we'll be glad to solve your queries.